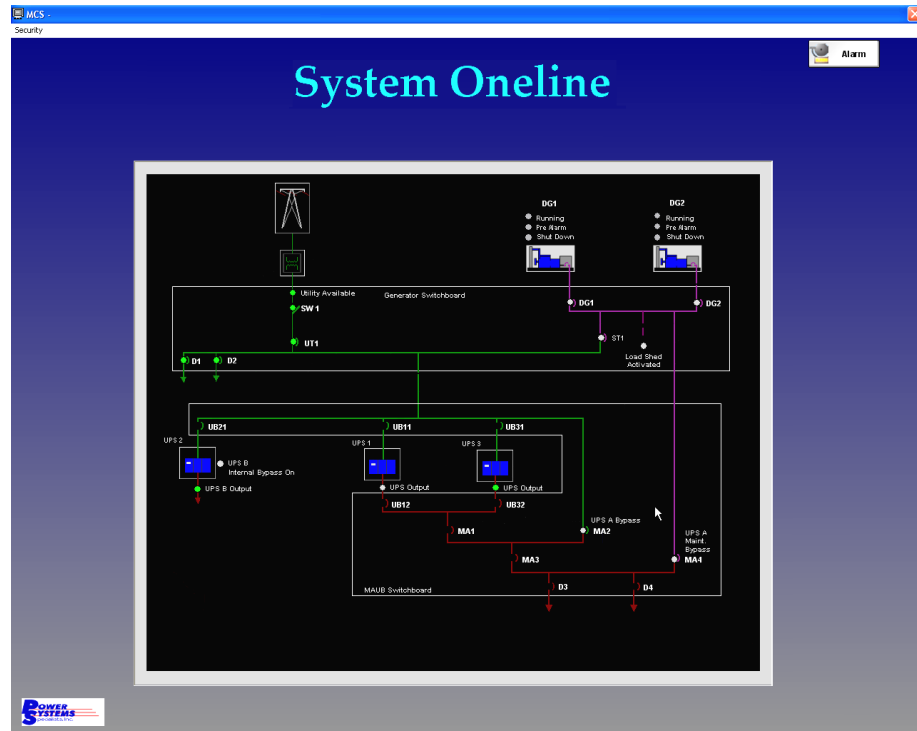


Monitoring & Control System

The MCS system by PSS, is designed to be able to replace the KW Controls / Piller Master Control Console computer system which was designed for DOS computers. Facilities managers can not rely on hardware and software that was designed to use old Windows DOS to operate and monitor their generator system. In the event of a computer failure, trying to find a computer that can have a copy of Windows DOS installed on it with the proper drivers can be almost impossible. That is why PSS MCS system is the most cost effective solution for upgrading the older KW Controls / Piller computer consoles.



PSS will create and design custom screens, configure the system's presentation and operation to your satisfaction, presenting the information in a clear and understandable method for all levels of personal, from engineering to the untrained or unfamiliar individual. PSS can custom design any system, large or small, at significant savings while still using your existing PLC and monitoring boards while.

MCS features:

- Customized screen layouts including site specific electrical one lines with actual equipment status screens and Alarm screens.
- Optional Remote communication and status via the Internet.
- Optional Remote alarm screens for security or maintenance offices .

